



# Test Tools

## Visa payWave Test Tool

### Who is it for?

Visa payWave Test Tool is the official Visa Europe test tool for Acquirers, Acquirer Processors, Terminal Manufacturers and Terminal Vendors who want to test contactless payment devices for Visa payWave acceptance.

### Why do you need it?

The Visa payWave Test Tool performs the required and mandated tests as specified by Visa before your payWave terminal can be deployed at the merchant's location. This ensures that the terminal can correctly handle Visa payWave cards (from all regions).

Visa payWave Test Tool provides a unique solution enabling you to validate the configuration of your Visa payWave terminals. The tool uses contactless card simulation and automatically generates the test report that you need to submit to Visa for evaluation.

### What is inside?

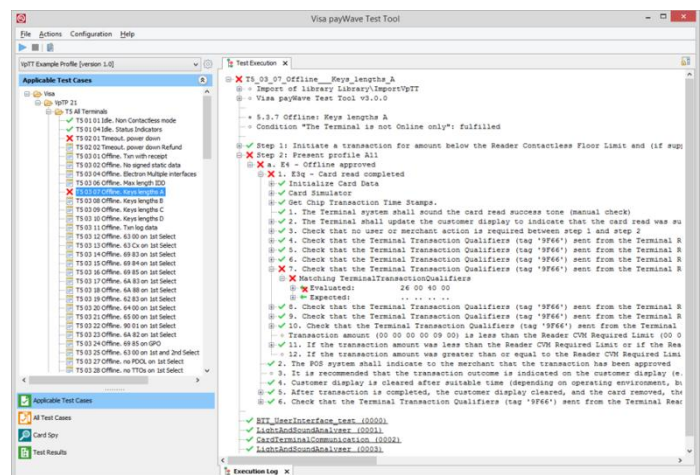
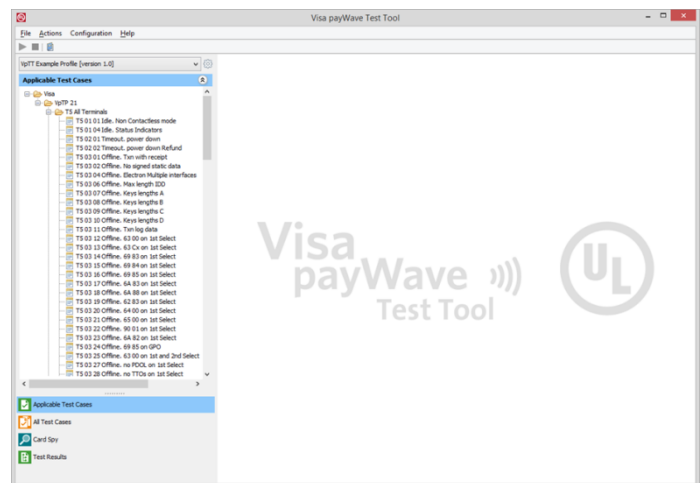
The Visa payWave Test Tool is an official Visa Europe tool that covers all specifications of the formal Visa payWave Procedures; enabling you to perform the mandated tests for your contactless terminal.

The user-friendly graphical interface enables you to carry out all tests in an efficient manner. Before each test, the tool displays a set of easy-to-follow on-screen instructions explaining the type of transaction that you need to perform, and guiding you towards the completion of the test case

The basic set-up involves a PC running the Visa payWave Test Tool software connected to:

- **UL SmartWave Box** This hardware combined with the SmartWave Probe performs the contactless card simulation and communication capture.
- **UL Light and Sound Detector** This hardware is tailored for analyzing and validating optical and audio signals.

The Visa payWave Test Tool also includes contactless card spy functionality which can be used to trace transaction communication between a real payWave card and a contactless reader/payment device.



### Key benefits

- An official Visa Europe tool enabling you to perform the Visa Europe mandated tests for contactless terminals
- User friendly test tool with easy-to-follow instructions
- Speed up your development and validation process
- Contactless card simulation, no physical cards needed
- The Visa payWave Test Tool is delivered as a complete and portable box including all software and hardware.

# Visa payWave Test Tool

## Specifications

### Features

- Meet all specifications of the official Visa payWave Procedures
- Configurable for every terminal intended to be compliant with Visa payWave Procedures
- Simulation of contactless test cards required
- Optical and audio analyzing and validating
- Flexible test management:
  - Store and view results per terminal profile
  - Repeat tests
  - Log test runs and results
- Automatic compliance report generation
- User-friendly GUI with clear results

### Reporting

- Automatically generated detailed test results
- Generate Test Report to submit to Visa:
  - .PDF format
  - .HTML format

### payWave Card-Terminal Analyzer

- Contactless card spy functionality
- Trace the communication between a real payWave card and a contactless reader/terminal
- Raw data interpretation including low level protocol communication

## Technical Support

To ensure that you can effectively use the tool and gain the maximum benefits, UL offers for tools a Service Contract that gives you access to our Technical Support services. Our experienced technical team is available to provide support, advice and guidance.

The following services are covered

- New releases
  - Helpdesk support
  - Bug fixes
  - Instant hardware replacement
- You can access these services through the service portal at [www.ul-ts.com](http://www.ul-ts.com).

## Software & Hardware

### The complete package includes:

- Visa payWave Test Tool Software
- User Manual
- Visa payWave documentation:
  - Contactless Terminal Requirements and Implementation Guide (TIG) document
  - Visa payWave Test Procedures (VpTP) specification
- Two physical Contactless Test Cards for specific tests
- UL Light and Sound Detector
- UL SmartWave Box
- Service Contract

### UL SmartWave Box

- Simulate layer 3 and layer 4 behavior of contactless cards
- USB connection
- Radio frequency
  - Frequency: 13.56 MHz
  - Speeds: ~106, ~212, ~424, ~847

### UL Light and Sound Detector

- Fiber optic cables with purpose built mounts for light detection
- Microphone for sound detection
- Adjust sensitivity for light and sound detection
- USB and USB-Host ports

