



Brand Test Tool

Why - All payment schemes mandate proper testing before allowing payment devices to be connected to their network infrastructure. The ultimate goal of these tests is to ensure interoperability and to have an EMV-compliant, payment association-certified terminal that can perform trouble-free transactions within your payment infrastructure.

Whether you are involved in acquiring EMV transactions, developing POS/ATM software or integrating retail payment environments, brand testing is essential and payment associations have made these tests mandatory.

UL Brand Test Tool assists you in easily and successfully performing the brand testing processes.

Who - The **UL Brand Test Tool (BTT)** is the most complete test tool for Acquirers, Acquirer Processors, Merchants and ATM/Terminal Vendors that want to validate payment devices before connecting to the major payment networks.

What - The **Brand Test Tool** includes a suite of integrated software products, including

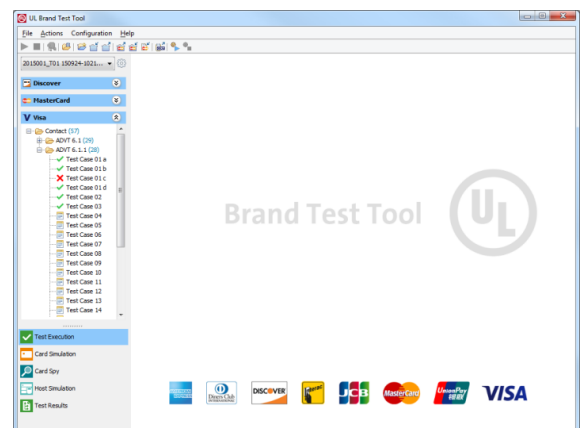
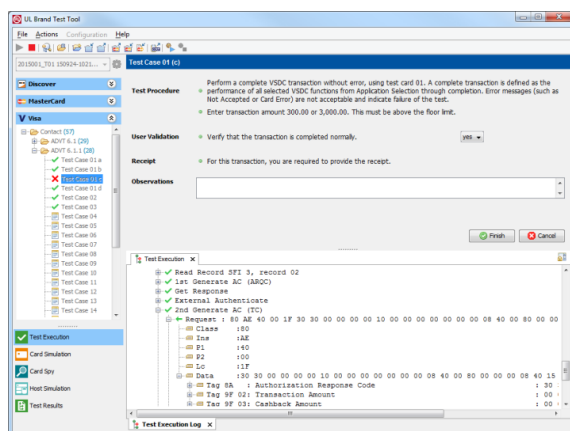
UL Brand Test Tool (BTT)

Supports the test and certification processes of the major payment associations. It has been qualified and/or confirmed by:

American Express, Diners Club, Discover, Interac, JCB, MasterCard, UnionPay and Visa.

All mandatory tests implemented for:

Point of Sale (POS) terminals, Mobile POS (MPOS) devices, Automated Teller Machines (ATM), Vending machines and other payment devices.



Uses card simulation instead of physical cards to perform brand test cases requiring contact or contactless cards.

For ATMs equipped with motorized readers, an optional ATM Test Module is available.

With the optional Host Simulator you have even more flexibility in your testing. It allows you to set the host configuration parameters at your discretion.

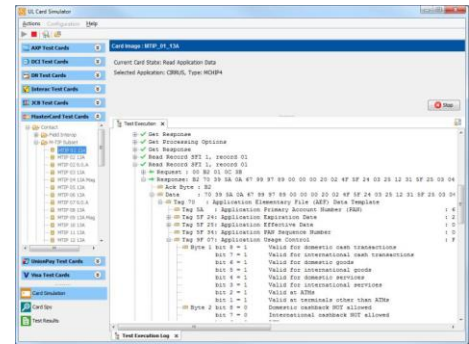


Brand Test Tool

UL Card Simulator

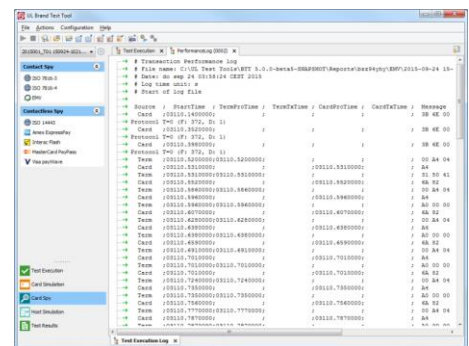
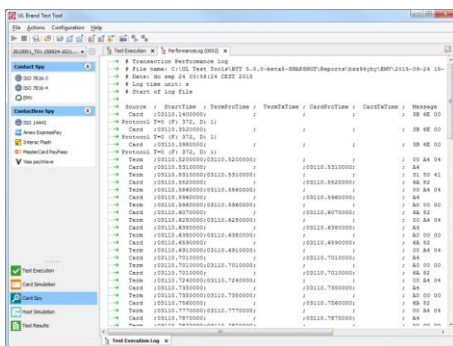
Simulates the real behavior of a contact or contactless EMV card without the need for any physical cards.

It simplifies the terminal testing procedure in various ways, mainly by eliminating the dependency on EMV issuers and schemes for physical test cards. It is a state-of-the-art tool that can simulate any and all functions of an actual smart card, both contact and contactless. The tool simulates card profiles for all major payment schemes.



UL Card Spy

An ideal tool when it comes to troubleshooting interoperability-related problems between cards - contact and contactless - and card accepting devices such as EMV payment terminals (POS or ATM), eMVRTD readers, and AFC readers.



The UL Card Spy provides an automatic interpretation of smart card commands and responses and shows the exchange of data between a smart card and card accepting device. The time stamp feature allows for accurate performance measurements on the byte level.

UL Brand Test Tool - Key Benefits

- One brand certification tool for all major payment brands
- Always up-to-date with the latest specifications
- Card simulation without physical cards for contact, contactless, and magstripe
- Supports transaction performance testing
- On-screen user guidance when performing tests
- Integrated with M-TIP and ADVT test processes
- Includes UL Card Simulator and UL Card Spy
- Includes a SmartLink Box and contact probe for contact EMV card simulation
- Includes a SmartWave Box and contactless probe for contactless EMV card simulation
- Optional SmartConnect Probe – Bluetooth SmartLink Box and SmartWave Box replacement (see below)
- Optional SmartStripe Probe – Magstripe simulation (see below)





Brand Test Tool

UL BTT SmartConnect

- ④ Includes all functionality of the traditional Brand Test Tool
- ④ Portable Bluetooth enabled integrated probe for contact and contactless testing and certification
- ④ The Bluetooth probe includes all the functionality of the SmartLink and SmartWave boxes and probes (not required)
- ④ One brand certification tool for all major payment brands
- ④ Includes UL Card Simulator and UL Card Spy
- ④ Optional SmartStripe (see below)



UL BTT SmartStripe MSR Probe

- ④ Brand Test Tool Magstripe Probe
- ④ Removes the requirement to have physical Fallback magstripe test cards
- ④ Simulates all magstripe cards required for card brand certification
- ④ Attaches via a USB port
- ④ Fully integrated with the Brand Test Tool and Card Simulator





EMV™ Contact & Contactless Test Tools	Product Price*	Annual Service Fee**
UL Brand Test Tool – Contact & Contactless <ul style="list-style-type: none"> License Dongle, Software SmartLink Box, Card Probe, cables SmartWave Box, Power Supply, Card Probe, cables Support for Amex, Diners, Discover, Interac, JCB, MasterCard, UnionPay and Visa *** Magnetic stripe Test Cards for Brand testing Brand Test Tool – gives you the ability to execute certification test cases EMV Card Simulator – gives you the ability to simulate EMV contact and contactless cards Card Spy Application - gives you the ability to trace, capture and analyze a transaction between a device and an actual EMV or contactless physical card First year of service, maintenance and updates is included via www.ultesttools.com 	\$12,240	\$2,040
UL Brand Test Tool – SmartConnect (Contact & Contactless) <ul style="list-style-type: none"> Portable Bluetooth enabled integrated probe for contact and contactless testing and certification (SmartLink and SmartWave boxes and probes are not required) License Dongle, Software Support for Amex, Diners, Discover, Interac, JCB, MasterCard, UnionPay and Visa *** Magnetic stripe Test Cards for Brand testing Brand Test Tool – gives you the ability to execute certification test cases EMV Card Simulator – gives you the ability to simulate EMV contact and contactless cards Card Spy Application - gives you the ability to trace, capture and analyze a transaction between a device and an actual EMV or contactless physical card First year of service, maintenance and updates is included via www.ultesttools.com 	\$12,240	\$2,040
UL Brand Test Tool – Contact Only <ul style="list-style-type: none"> License Dongle, Software SmartLink Box, Card Probe, cables Support for Amex, Diners, Discover, Interac, JCB, MasterCard, UnionPay and Visa *** Mag Stripe Test Cards for Brand testing Brand Test Tool – gives you the ability to execute certification test cases EMV Card Simulator – gives you the ability to simulate EMV contact cards Card Spy Application - gives you the ability to trace, capture and analyze a transaction First year of service, maintenance and updates is included via www.ultesttools.com 	\$8,200	\$1,640
UL Brand Test Tool - Contactless Hardware Upgrade <ul style="list-style-type: none"> SmartWave Box, Power Supply, Card Probe, cables Required to enable contactless card support for UL applications First year of service, maintenance and updates is included via www.ultesttools.com 	\$2,500	\$500
UL Brand Test Tool ATM Module <ul style="list-style-type: none"> Contact + Contactless Card reader, cable Contact Programmable Cards This set of test cards is ideal for testing environments where a ‘card capturing’ device is being tested or demonstrated (e.g. ATM, fuel-pump) 	\$1,800	\$300



UL Test Tools

EMV™ Contact & Contactless Test Tools	Product Price*	Annual Service Fee**
UL SmartConnect Contact/Contactless Probe <ul style="list-style-type: none">Ⓢ Upgrades your existing Brand Test Tool (SmartLink and SmartWave) to include the portable Bluetooth enabled integrated SmartConnect probe for contact and contactless testing and certificationⓈ The SmartConnect probe replaces your existing SmartLink and SmartWave boxes and probesⓈ The SmartConnect probe works in conjunction with the UL Brand Test Tool software (not included)	\$4,995	\$999
UL SmartStripe MSR Probe <ul style="list-style-type: none">Ⓢ SmartStripe MSR Probe simulates magstripe cardsⓈ Fully integrated with the Brand Test Tool and Card Simulator	\$500	\$100

* All prices are in U.S. Dollars and do not include any applicable taxes

** The first year of the Annual Service Fee is included in the purchase price – For products not listed above, the Annual Service Fee for subsequent years is 20% of the purchase price

*** List accurate at time of publishing – UL Identity Management & Security, makers of UL and Collis-brand tools, continues to develop support for other card brands

For additional information about the UL EMV Test Tools visit:

www.b2ps.com/products/ul-emv-test-tools

To shop online visit:

shop.b2ps.com



UL Product Service

One year of service is included with your initial product purchase. Each year thereafter, Customers have the option to purchase an additional 1-year Service Contract. The UL Service Contract terms and conditions are as follows:

1. The Service Contract includes the following:
 - **New releases**
New product versions are released periodically by UL. Customers with an active Service Contract may download the new releases from the UL website. Newer product versions will always be backward compatible unless clearly stated.
 - **Helpdesk support**
Access to the B2/UL Helpdesk for product usage questions, support with operational issues and for assistance installing new product releases.
 - **Hardware replacement**
If a hardware issue occurs, B2/UL will work with you to identify the failing component. If you have an active Service Contract and new hardware is required, it will be shipped to you free of charge (transportation costs borne by B2/UL). When requested by B2/UL, it is the Customer's responsibility to return the old defective hardware (transportation costs are the responsibility of the Customer).
 - **Updates and fixes**
If the Customer discovers a software bug, UL will investigate and resolve the issue. During the resolution period, UL will keep the Customer updated via emails sent from the UL service ticketing system. When a fix is available, it will be immediately provided to the Customer. When UL receives confirmation that the fix has resolved the reported issue, it will be added to the next product update and made available to all Customers.
2. The UL Service Contract has a term of one (1) year. The Service Contract will be extended annually by one (1) year unless the Customer ends the Service Contract before the end of the current service year (by mail, fax or by e-mail). The annual Service Contract will be invoiced by B2 at the start of each service year (beginning at the anniversary date of original software / hardware delivery).
3. UL is not liable for any damage that may result from the use of the Product.

**For additional information please contact B2 at 416.730.9827 ext. 8
or email us at UL@b2ps.com**



Enter order details in the blue highlighted fields and click "Email Form" to email the completed form to orders@b2ps.com or fax to 888.472.3311.

Prices are valid within North America until December 31, 2019. All amounts are in U.S. Dollars

Shipment Information	
Company Name: _____	
Contact Name: _____	Phone: _____
Address 1: _____	Province/State: _____
Address 2: _____	Postal/Zip: _____
City: _____	Country: _____
Contact Email: _____	
Credit Receipt Email: _____	(if different)

Credit Card Payment (Amex / Discover / Mastercard / Visa) ***

☐

I hereby authorize B2 Payment Solutions to charge my credit card the amount shown on the Total (USD) line above

**Call to obtain my card
information ******

Name on Card:

Expiry (MM/YY): /

Card Number:

CVV2:

This order is subject to the [B2 Standard Terms & Conditions](#)

* Items ship next business day from Canada – B2 is not responsible for customs and/or courier delays

**** Prices valid within North America only – for international shipments contact B2 for a Custom shipping quote**

*** Contact B2 for other payment options

**** Difficulty contacting you to obtain your payment information may cause processing delays